



# Year 9 GCSE Options

Welcome to the next step in your remarkable journey

Make a choice that is right for you!

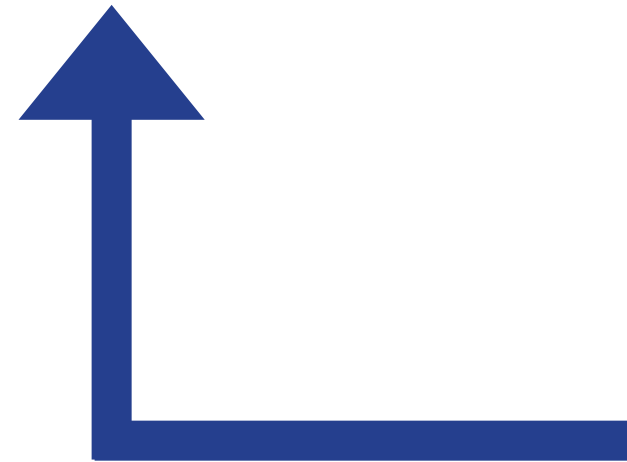


"Your **future** is created by the **choices** you make today.  
Choose wisely, dream big, and take the first step  
toward your **ambitions**."

# Year 9 GCSE Options

This booklet is designed to guide you through the exciting process of shaping your future at Key Stage 4. Here, you'll discover the wide range of subjects we offer.

Contents	
Welcome to Key Stage 4	Page 4
The English Baccalaureate	Page 5
Choosing your options	Page 6
The 'options' families	Page 7
My Timetable	Page 8
Exam Boards	Page 9
Informed Choices	Page 10
Further Support	Page 11
Making the right choices	Page 12
What not to do	Page 13
What to do now	Page 14
Online application	Page 15
Option calender	Page 16
Deadline Day	Page 17
The Option Subjects	Page 18
Careers Opportunities and Post-16 Pathways	Page 54
The Ripley Academy Sixth Form	Page 55



# Welcome to Your Key Stage 4 Journey

This booklet is designed to guide you through the exciting process of shaping your future at Key Stage 4. Here, you'll discover the wide range of subjects and opportunities available, helping you make informed choices that reflect your interests, strengths, and ambitions.

Our Key Stage 4 curriculum combines a strong 'Core' foundation with a flexible range of 'Options,' giving you the freedom to tailor your learning experience. Whether you're pursuing academic challenges, practical skills, or creative passions, this is your chance to take the first steps toward your future goals.

## Core Subjects | 60%

- English Language
- English Literature
- Mathematics
- Combined Science
- Personal Development
- Physical Education

## Option Subjects | 40%

- |                                  |                          |
|----------------------------------|--------------------------|
| • Fine Art                       | • Geography              |
| • Photography                    | • Health and Social Care |
| • Arts, Crafts and Design        | • History                |
| • Business Studies               | • Music                  |
| • Computer Science               | • Option Support         |
| • Design Technology              | • Sport                  |
| • Drama                          | • Religious Studies      |
| • Food Preparation and Nutrition | • Spanish                |
| • French                         | • Separate Sciences*     |

\*Combined Science is compulsory for all students, unless they opt for Separate Sciences. In this case Separate Science replaces Combined Science

# The English Baccalaureate (EBacc)

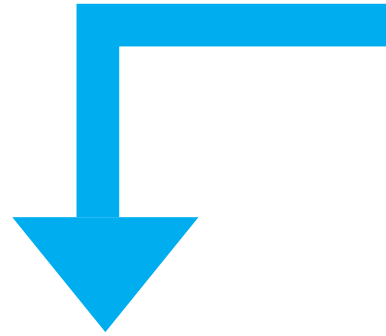
## A Pathway for Academic Excellence

The English Baccalaureate is a combination of academic GCSE qualifications. These subjects are

- **English**
- **Maths**
- **Science**
- **History or Geography**
- **A Modern Foreign Language; either French or Spanish**

The EBacc includes academic subjects highly valued by employers and universities. The subjects help to develop critical thinking and written communication skills.

Statistics show that students who study the full range of EBacc subjects have a greater probability of progression to strong post-16 academic outcomes and are better prepared for Higher Education.



# Choosing Your Options

## Core Subjects: The Foundation of Your Education

All students at The Ripley Academy will follow a core curriculum designed to provide a strong academic foundation and essential life skills. This includes:

- English Language and English Literature
- Mathematics
- Combined Science or Separate Sciences
- Personal Development
- Physical Education (PE)

These subjects ensure every student gains key qualifications and develops skills for future success.

## Humanities

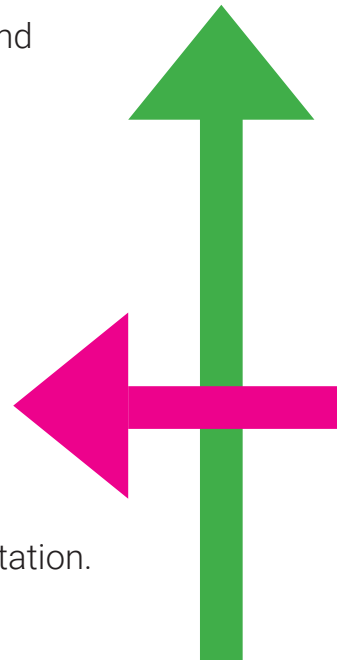
All students study either **History or Geography** as part of their options. Students have the option to select both History and Geography as two separate choices.

## Modern Foreign Languages

Students in Set 1 or 2 for Maths and/or English are strongly recommended to include a language in their choices.

## Combined or Separate Sciences?

Combined Science is compulsory for all students and worth two GCSEs. However, there is an option to replace this with Separate Science. Separate Science is a selected option in which students will study Biology, Chemistry and Physics as separate subjects, gaining three separate GCSEs, one for each subject. Students can only study Separate Science by invitation.



# The Option 'Families'

Option subjects are selected from our Option 'Families'. To ensure breadth and balance, consider selecting your 4 options from **at least 3 different 'Options Families'**.

The Option 'Families'					
English Baccalaureate Subjects			Non-eBacc Subjects		
Humanities	MFL	Science	Technology	Expressive Arts	Additional Options
Geography History	French Spanish	Separate Sciences <small>Biology, Chemistry &amp; Physics</small> Computer Science	Food Preparation and Nurition  Design and Technology	Fine Art  Arts, Crafts and Design  Drama  Music  Photography	Business Studies  Health and Social Care  Religious Studies  Sport  Option Support*

\*Option Support will be offered to some students to provide additional support and time to complete GCSE work

# What will my timetable be made up of?

30 hours of your two week timetable will be made up of the **core curriculum**. The remaining 20 hours will be made up of your four option subjects, with 5 hours dedicated to each option.

Subjects		Qualifications	Number of Lessons
Core Subjects	English Language	1 GCSE	8 lessons
	English Literature	1 GCSE	
	Mathematics	1 GCSE	8 lessons
	Combined Science	2 GCSEs	10 lessons
	Personal Development		1 lesson
	Physical Education*		3 lessons
Options	Option 1	Qualification awarded will depend on the options you select	5 lessons
	Option 2		5 lessons
	Option 3		5 lessons
	Option 4		5 lessons
		Total Lessons	50 Lessons



## Personal Development

Personal Development encompasses Citizenship and Personal, Social, and Health Education, integrating key areas such as Relationships and Sex Education, Careers Guidance, Enterprise, Economic Wellbeing, and Personal Finance.

\*When not selected as a GCSE Option, PE remains compulsory for all students and is a National Curriculum Subject.



# Exam Board Specifications 2026-2028

The following is an overview of the Key Stage Four courses taught at The Ripley Academy for Year 10 students starting in September 2026.

Subjects	Qualifications	Awarding Body and Specification
English Language	GCSE	AQA 8700
English Literature	GCSE	AQA 8702
Mathematics	GCSE Foundation and Higher	OCR J560
Combined Science - Trilogy	GCSE Foundation and Higher	AQA 8464
Fine Art	GCSE	AQA 8202
Photography	GCSE	AQA 8206
Computer Science	GCSE	OCR J277
Food Preparation and Nutrition	GCSE	AQA 8585
Design Technology	GCSE	AQA 8552
Arts, Crafts and Design	GCSE	AQA 8201
Drama	GCSE	Eduqas
Business Studies	GCSE	Eduqas
Geography	GCSE	AQA 8035
History	GCSE	Edexcel 1H10
Religious Studies	GCSE	AQA 8062
French	GCSE Foundation and Higher	AQA 8652
Spanish	GCSE Foundation and Higher	AQA 8692
Sport	BTEC	Pearsons
Music	GCSE	OCR J536
Option Support*	Non-Examined Course	n/a
Sport	GCSE / BTEC	AQA 85828463
Separate Sciences (Biology, Chemistry & Physics)*	GCSE Foundation and Higher	AQA 8461; AQA 8462; AQA
Health & Social Care	BTEC Technical Award	Pearson



\*by invitation only

# Informed Choices - Considering Your Pathway

Most universities, do not have universal GCSE subject requirements. Subject choice is ultimately much more important at the post-16 or A-level stage.

However, entry requirements vary across universities and courses. We strongly advise students to check individual university websites for detailed course-specific requirements before finalising their options.

Many courses at university level build on knowledge and skills which you will gain while still at school. Universities need to make sure that all the students have prepared themselves in the best way to cope with their chosen course. Some university courses may require you to have studied a specific subject prior to entry, others may not.

Choosing a broad range of academic GCSE subjects now can help pave the way for future success.

## Further Support and Guidance

In addition to the various events listed on the Options Calendar, students and parents can access a wide range of support and guidance to help them make informed decisions about subject choices:

### **Head of Year and Form Tutors**

Our pastoral team are here to support discussions about the suitability of choices and combinations of subjects.

### **Mrs. Robinson-Kent and the Learning Support Team**

Our Learning Support Team will provide essential guidance and support for students who have additional learning needs.

### **Mrs. Tollervey**

As our Careers Lead in school, Mrs. Tollervey will provide further advice on how option choices align with careers and post-16 pathways.

### **Subject Staff**

Available to provide detailed information about specific subjects.

### **Mrs. Thawley (Deputy Headteacher)**

As Deputy Headteacher with responsibility for curriculum, Mrs Thawley leads our Y9 option process and will be on hand to support you with any outstanding queries related to options.

# Making the Right Choices: A Guide to Success

Choosing your options is an important step in shaping your future, but it doesn't have to be overwhelming. This is your chance to think carefully about what you enjoy, what you're good at, and what will help you achieve your goals. To make the best decisions, follow these simple guidelines.



## **Seek advice, but think for yourself**

Talk to teachers, parents, and careers advisors, but make decisions that suit your goals and interests.

## **Choose a balanced timetable**

Aim for a variety of subjects that reflect your interests and strengths without focusing too narrowly on one area.

## **Show ambition**

Challenge yourself by selecting subjects that push you to do your best while staying realistic about your abilities.

## **Research your options**

Find out what each subject involves, how it's assessed, and what skills it develops to ensure it aligns with your goals.

## **Consider your strengths**

Think about the subjects you excel in and enjoy, as these are likely to keep you motivated and lead to success.

## **Plan for your future**

Consider how your subject choices might impact your A-level options, career plans, or university aspirations.

## **Keep your options open**

If you're unsure of your future plans, aim for a broad selection of subjects to give yourself maximum flexibility.

## **Remember, there's another chance at 16.**

The decisions you make now are important, but you'll have the opportunity to adjust your path when choosing post-16 options.

# What NOT to do

It is important to avoid simply following the crowd. The decisions you make now will shape your future. Think carefully about what you want to achieve, and be mindful to avoid falling into the following traps.



## **Just follow your friends.**

Pick the subjects that are right for you, not the ones your friends are taking.

## **Choose 'easy options.'**

There are no easy routes—every course requires commitment and effort.

## **Select a course based on appearance.**

Don't choose a subject because you've heard it's easier or think it has less work. Find out the facts first!

## **Assume a vocational course guarantees a job.**

Vocational courses can provide valuable skills, but they don't automatically lead to employment.

## **Rush your decisions.**

Take time to weigh up your options and get all the information you need before making your choices.

## **Window shop.**

Avoid choosing subjects based on surface-level impressions or without understanding what they involve.

## **Assume that you will study certain topics**

Some students study 3D Design because they believe they will design cars, or Computer Science because they design games. Only pick your options when you know what the course is about.

# What do I do now?

Its now time to pick your option subjects. You are required to select four options (one of these must be either History or Geography) and two reserve options. Remember to consider the breadth and balance of our Option Families, as well as the English Baccalaureate measure.

Option Subjects
Arts, Crafts and Design
Business Studies
Computer Science
Design Technology
Drama
Fine Art
Food Preparation and Nutrition
French
Geography
Health & Social Care
History
Music
Option Support*
Photography
Religious Studies
Separate Sciences (Biology, Chemistry & Physics)*
Spanish
Sport^

## How to Apply?

1. Decide which four subjects you would like to study, and which two you would like as backup options.
2. Fill in the online application form listing the six subjects in **order of preference**.
3. Do not apply for any course unless you have definitely decided that you are **fully committed** to this course.
4. Submit the application form online by Tuesday 3rd February 2026

**Note:** If there are any issues identified, you may be asked to amend the form.

\*by invitation only

^when choosing sport as a pathway each student will be allocated the most appropriate sport qualification for them, this could be either the GCSE or BTEC qualification we offer

# Online Application Form

You will select your options using the Online Application Form. This form will become live on Wednesday 28th January 2026 following Year 9 Parents Evening.

The form link will be made available on our Class Charts Platform and must be submitted by Tuesday 3rd February 2026.

## Important Notes

- The forms may be submitted at any time between the 28th January and 3rd February.
- Returning the form early does not have any impact in terms of you receiving an offer of your first four choices.
- We cannot guarantee that you will get your first four choices.
- The order of preference of your 6 choices will influence what is offered to you if we cannot timetable one or more of your first four choices.
- Your order of preference will also influence how the Option Blocks are put together.
- The order is very important, so we ask you to think very carefully about it.

# Options Calendar 2025-2026

Your journey to choosing the right options starts here! This timeline outlines the key events and deadlines to help you make informed decisions about your future. Take advantage of the opportunities to gather information, ask questions, and seek advice to ensure you feel confident about your choices.

Make sure you're aware of the important dates below and plan ahead to meet all deadlines.

Date	Calendar Event
Wednesday 7th January 2026	Option Booklets issued during Year 9 Options Assembly.
Throughout January	We will publish subject specific information on the school website to support you.
Monday 12th January 2026	This week Option Interviews will take place with a member of SLT.
Thursday 15th January 2026	Options Evening 5.30pm - 7:00pm
Wednesday 28th January 2026	Year 9 Parents Evening: An opportunity to discuss the feasibility of options with subject teachers
Wednesday 28th January 2026	<b>Online Option Application Form Opens, find the link on class charts</b>
Tuesday 3rd February 2026	<b>Deadline for online application form</b>
May 2026	School Governors approve finalised Options offer
July 2026	Notification to students/parents/guardians of Option allocations





## **3<sup>rd</sup> February 2026 - Deadline Day**

The 2026 option deadline is 3<sup>rd</sup> February 2026. Please note that option applications will not normally be accepted or amended after the deadline.

Options forms will be considered and will be approved by School Governors in May 2026, with confirmation of your Options being published to students, parents and guardians in July 2026.

# Option Subjects

The next section of our options guide provides an overview of the subject options available to you. Please read these overviews carefully. This is your opportunity to explore your choices and prepare any questions you may have ahead of our Options Evening and upcoming Parents' Evenings.



Subjects	Page
Arts, Crafts and Design	Page 20
Business Studies	Page 22
Computer Science	Page 24
Design Technology	Page 26
Drama	Page 28
Fine Art	Page 30
Food Preparation and Nutrition	Page 32
French	Page 34
Geography	Page 36
Health & Social Care	Page 38
History	Page 40
Music	Page 42
Option Support*	Page 44
Photography	Page 45
Religious Studies	Page 46
Separate Sciences (Biology, Chemistry & Physics)*	Page 48
Spanish	Page 50
Sport^	Page 52



\*by invitation only

^when choosing sport as a pathway each student will be allocated the most appropriate sport qualification for them, this could be either the GCSE or BTEC qualification we offer

# GCSE Arts, Crafts and Design (focusing on 3D Design and Textiles)

**Please Note:** Subject cannot be taken in conjunction with Fine Art

**Examination Board:** AQA

## Why Choose 3D Design?

This course is perfect for students who want to explore creative pathways in theatre, film, and television through fashion, costume, set, and prop design. It builds on the skills and techniques learned in Design and Technology in Years 7, 8, and 9. Students will work with a variety of materials and develop designs that combine traditional and modern techniques. Whether you are interested in design, architecture, or creative industries, this course offers opportunities to develop practical skills and explore your artistic style. GCSE Art, Crafts and Design is an enjoyable course which will be of interest to anyone who has enjoyed the subject at Key Stage 3, and is an essential course for any student who is considering careers in; interior design, architecture, graphic design, fashion design and theatre design.

## Key Skills Developed

- Drawing and visual research.
- Developing ideas inspired by the work of other designers and artists.
- Exploring materials, refining techniques, and creating prototypes.
- Producing a personal response that connects to professional creative work.

## Assessment Overview

Assessment for the course is divided into two components:

### 1. Controlled Assessment (Portfolio of Work) – 60%

The course starts as soon as the pupil enters Year 10 and the emphasis is placed on the pupil producing a large portfolio of work that demonstrates a wide range of 3D design skills and experiences. Pupils will be set a combination of termly and half termly projects that explore a range of materials and themes, these will include a combination of traditional and modern techniques and processes. As the course progresses students will be able to place more individual interpretation into the topics being covered developing work that expresses their own artistic preferences .

## **2. Externally-Set Assignment – 40%**

Students will receive an examination paper in the spring term of Year 11. The paper will contain a selection of open-ended questions. Students are required to answer in depth one question. Students will have a set period of classroom and homework time to pre-plan and test their ideas, with help and advice, before producing a final piece of unaided work over 10 hours of examination time.

### **Who to Contact for More Information**

For further details, please speak to Miss Barton.



# GCSE Business

**Examination Board:** Eduqas

## Why Choose Business Studies?

Business Studies is a valuable and internationally recognised qualification that opens doors to employment in a wide variety of industries. This course offers a fascinating insight into the activities of real businesses, helping students understand how businesses operate and their role in our modern, global society. This subject is relevant to all future employment, providing a strong foundation for understanding the business environment, including the increasing impact of technology on modern industries. You will enjoy this course if you are curious about the future of business, intrigued by the success of companies like Google, Tesla, and Apple, and eager to develop your ability to draw well-reasoned conclusions based on real-world evaluation.

## Key Skills Developed

- Problem-solving.
- Gathering and analysing data effectively.
- Written and verbal communication.
- Teamwork and collaboration.
- Creativity and innovation.
- Evaluation, self-reflection, and critical thinking.

## Course Structure

The course covers six key topics:

1. **The Nature of Business Activity** – Understanding the purpose and types of business activity.
2. **Influences on Business** – Exploring how external and internal factors affect businesses.
3. **Business Operations** – Examining how businesses produce goods and services.
4. **Finance** – Gaining insight into financial decision-making.
5. **Marketing** – Learning how businesses promote and sell their products and services.
6. **Human Resources** – Understanding how businesses manage and develop their workforce.

## Assessment Overview

Assessment for the course is 100% examination-based. This is divided into two components:

1. **Component 1: Business Dynamics** (2 hour examination worth 62.5% of the qualification)
2. **Component 2: Business Considerations** (1 hour 30 minute examination worth 37.5% of the qualification)

## Who to Contact for More Information

For further details, please speak to Mr Radbourne.



# GCSE Computer Science

**Examination Board:** OCR (Specification J277)

## Why Choose Computer Science?

The GCSE in Computer Science is a practical and engaging course that fosters creativity and problem-solving skills. It provides a deep understanding of how computer technology works and what goes on behind the scenes. A significant portion of the course focuses on learning computer programming, which helps students develop critical thinking, analysis, and problem-solving skills that are transferable to other subjects, particularly mathematics and science.

This course is perfect for students interested in exploring how technology shapes the world and seeking a strong foundation for careers or further study in the rapidly growing tech industry.

## Key Skills Developed

- Understand and apply fundamental principles such as abstraction, decomposition, logic, algorithms, and data representation.
- Analyse problems computationally through designing, writing, and debugging programs.
- Think creatively, analytically, logically, and critically.
- Learn how digital systems operate and communicate with one another.

## Assessment Overview

Assessment for the course is 100% examination-based. This is divided into two components:

1. **Component 1: Computer Systems** (1 hour 30 minute examination worth 50% of the qualification)
2. **Component 2: Algorithms** (1 hour 30 minute examination worth 50% of the qualification)

## Who to Contact for More Information

For further details, please speak to Mr Hudson.







# GCSE Design and Technology

**Examination Board:** AQA (Specification 8552)

## Why Choose Design and Technology?

GCSE Design and Technology focuses on the design and manufacture of products using timbers and polymers. This course develops students' practical skills and creativity while teaching them about commercial processes and careers in design-related industries.

The emphasis is on iterative design processes, encouraging students to use their creativity and imagination to design and make prototypes that solve real-world problems. The course also builds transferable skills such as collaboration, communication, and critical thinking.

## What Will You Learn?

Students will:

- Explore the principles of design and manufacture, including technical and specialist topics.
- Learn about materials and their properties, with a focus on timbers and polymers.
- Work on projects such as architectural CAD/CAM lighting, casting, packaging, plastic forming, and mechanisms.
- Study the influence of other designers and how to integrate these ideas into their own work.
- Develop programming and mechanical skills.

## Assessment Overview

The GCSE is assessed through two components, each worth 50% of the final grade:

### Non-Exam Assessment (NEA) – 50%

Students complete a substantial design and make task over 30–35 hours, starting in June of Year 10.

The task includes:

- Investigating, designing, making, analysing, and evaluating.
- Producing a working prototype and a 20-page portfolio of evidence.

## Written Exam – 50%

Duration: 2 hours.

### Sections:

- Section A: Core Technical Principles (20 marks).
- Section B: Specialist Technical Principles (30 marks).
- Section C: Designing and Making Principles (50 marks).

### Topics Covered in the Exam

- New and emerging technologies.
- Energy, materials, systems, and devices.
- Materials and their working properties.
- Specialist technical principles (Timbers and Polymers).
- Design principles.
- Making principles.

### **Careers and Further Study**

This course provides a solid foundation for further study in design, engineering, or technology-related fields. It is also ideal for students considering careers in:

- Product design.
- Industrial design.
- Architecture.
- Manufacturing and engineering.

### **Who to Contact for More Information**

For further details, please speak to Miss Barton.



# GCSE Drama

**Examination Board:** Eduqas C690QS

## **Why Choose Drama?**

Drama is an exciting and creative course that introduces students to the performance process and the creative aspects of theatre. It is ideal for those who wish to develop their skills in performing arts, build self-confidence, or explore historical and contemporary topics in an engaging and imaginative way.

Students gain transferable skills such as teamwork, organisation, critical analysis, creative thinking, and self-evaluation, making this course highly valued by further education providers and employers alike. Drama provides a balance of practical and theoretical learning, allowing students to grow as performers both independently and collaboratively.

## **What Will You Learn?**

The course combines practical performance with theoretical exploration. Students will:

Develop and perform their own original drama pieces.

Explore and perform key extracts from plays.

Gain insight into how performances are created and staged.

Analyse and evaluate their own work and the work of others.

## **Assessment Overview**

The course is divided into three components:

Devising – 40% of overall GCSE

Assessment:

30% Portfolio: A written analysis and evaluation of the development process and final performance.

10% Practical: Students devise and perform an original piece of drama in response to a stimulus.

### Performance from a Text – 20% of overall GCSE

Assessment:

Students explore two key extracts from a play and perform them to a visiting examiner.

### Theatre Makers in Practice – 40% of overall GCSE

Assessment:

Written exam (1 hour 15 minutes): Students demonstrate their understanding of how a performance text is developed and staged.

The chosen performance text is explored practically in lessons to prepare students for the exam.

### **Is This Course Right for Me?**

Drama is suited to students who enjoy being practical and imaginative, have a passion for performing arts, and are committed to improving their skills. The course requires dedication to rehearsals and active participation in both group and individual work.

### **Careers and Further Study**

Drama equips students with a range of transferable skills that are beneficial in various career paths, including acting, directing, event planning, education, and more. Many students progress to A-level Drama, Performing Arts BTECs, or other creative disciplines.

### **Who to Contact for More Information**

For further details, please speak to Mrs O'Dowd.



# GCSE Art and Design: Fine Art

**Please Note:** Fine Art can not be taken in conjunction with 3D Design

**Examination Board:** AQA (Specification 8202)

## Why Choose Fine Art?

The Fine Art course allows students to develop their artistic skills and techniques, building on their work in Years 7, 8, and 9. Students will create a portfolio of work that explores traditional and modern art techniques, fostering creativity, self-expression, and critical thinking. This course is ideal for those passionate about art and looking to pursue careers in creative fields such as interior design, architecture, or graphic design.

## Key Skills Developed

Drawing from visual research.

Developing ideas inspired by the work of artists and designers.

Experimenting with a range of materials and refining techniques.

Creating a personal response that makes connections to the work of others.

## Assessment Overview

Assessment for the course is divided into two components:

### 1. Controlled Assessment (Portfolio of Work) – 60%

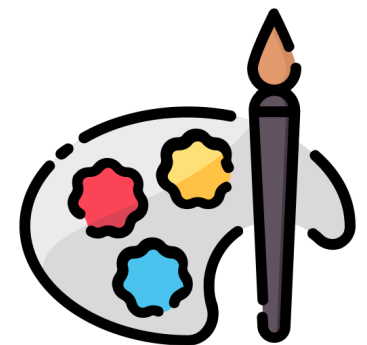
Students produce a large portfolio of work exploring materials, themes, and artistic processes throughout Year 10 and Year 11.

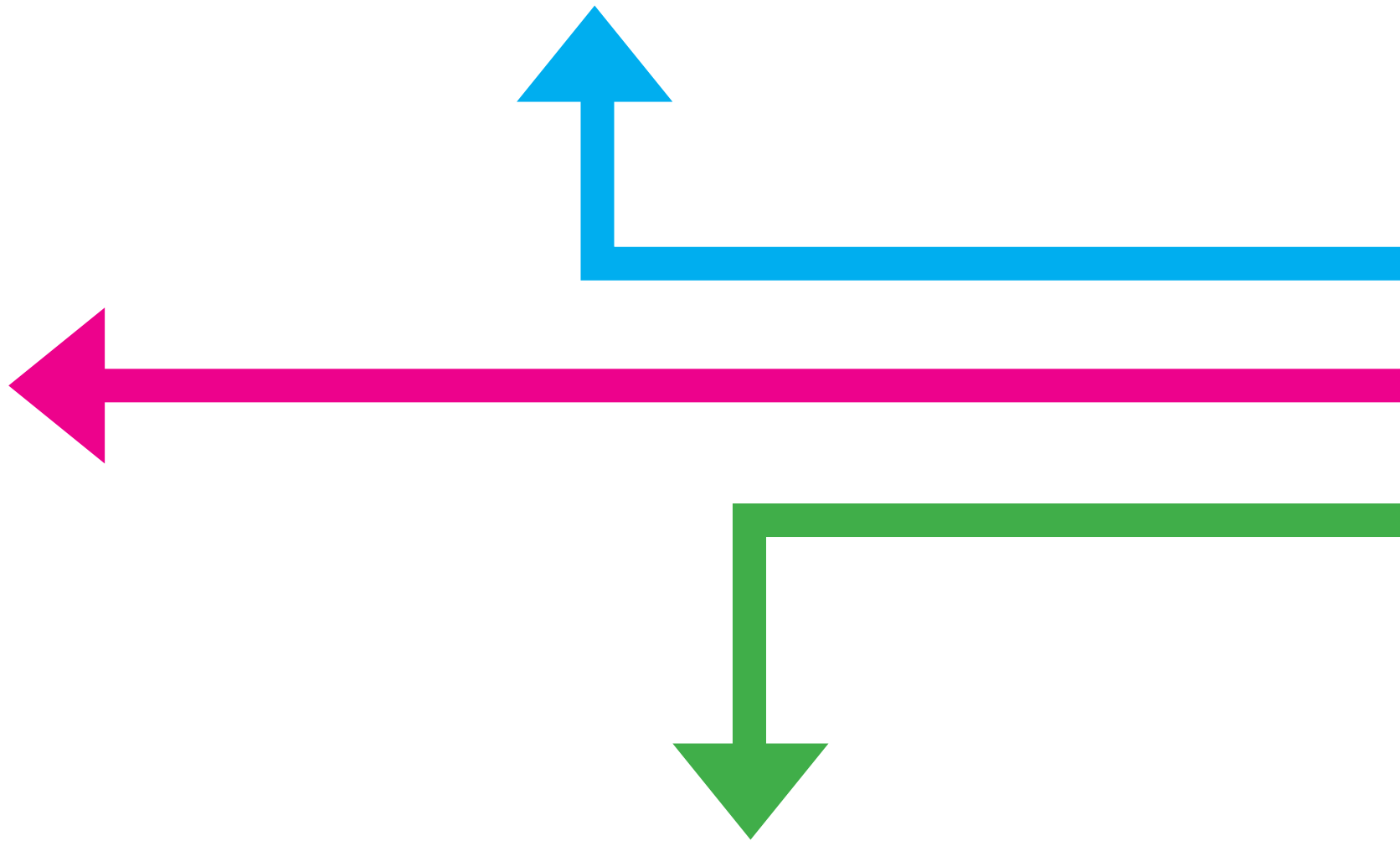
### 2. Externally-Set Assignment – 40%

In Year 11, students complete a project based on a question from an examination paper. This culminates in a 10-hour final piece created under exam conditions.

## Who to Contact for More Information

For further details, please speak to Miss Hart.





# GCSE Food Preparation and Nutrition

**Examination Board:** AQA (Specification 8585)

## **Why Choose Food Preparation and Nutrition?**

This exciting and creative course focuses on developing practical cooking skills while ensuring students gain a comprehensive understanding of nutrition, food provenance, and the working characteristics of food materials. At its core, this course nurtures practical cookery abilities and provides a strong foundation in nutrition, preparing students for further education or careers in the food and catering industries.

## **What Will You Learn?**

The course is structured around five core topics:

Food, Nutrition, and Health – Exploring the relationship between diet, health, and nutrition.

Food Science – Understanding the functional and chemical properties of food.

Food Safety – Learning how to safely prepare, store, and handle food.

Food Choice – Investigating dietary choices influenced by culture, religion, and health.

Food Provenance – Exploring where food comes from and its environmental impact.

## **Key Skills Developed**

Students will:

- Demonstrate safe and effective cooking techniques using a range of ingredients and equipment.
- Develop an understanding of the functional, sensory, and nutritional properties of food.
- Explore ingredients and processes from both British and international culinary traditions.
- Plan, prepare, and present dishes to a high standard.
- Analyse the relationship between diet and health, addressing poor dietary choices and their effects.



## Assessment Overview

The GCSE is assessed through both coursework (50%) and an exam (50%):

### Non-Exam Assessment (50%)

#### Task 1: Food Investigation (15%)

Students complete practical investigations and produce a written or electronic report (1,500–2,000 words) with photographic evidence.

#### Task 2: Food Preparation (35%)

Students plan, prepare, cook, and present a menu of three dishes in three hours, supported by a written or electronic portfolio with photographic evidence.

### Written Exam (50%) – 1 hour 45 minutes

Section A: Multiple-choice questions (20 marks).

Section B: Five structured questions with sub-questions (80 marks).

## Careers and Further Study

Upon completion of this course, students will be well-prepared to:

- Pursue further study in food and nutrition or catering.
- Embark on apprenticeships or careers in the food and hospitality industries.

Due to the practical nature of the course, students are required to provide their own ingredients throughout the two years.

Support is available for students in receipt of free school meals.

### Who to Contact for More Information

For further details, please speak to Mr. Barlow.



# GCSE French

**Examination Board:** AQA (Specification 8062)

## Why Choose French?

Learning French allows students to develop language skills alongside cultural awareness, opening doors to global career opportunities and enhancing academic and personal profiles. Employers highly value language qualifications, with 90% stating they favour candidates with language skills. A GCSE in French demonstrates resilience, a strong work ethic, and the ability to tackle a challenging subject.

## What Will You Study?

The course explores the following cultural themes:

- People and Lifestyle
- Identity and relationships with others.
- Healthy living and lifestyle.
- Education and work.
- Popular Culture
- Free-time activities.
- Customs, festivals, and celebrations.
- Celebrity culture.
- Communication and the World Around Us
- Travel and tourism, including places of interest.
- Media and technology.
- The environment and where people live.

Students are expected to commit to regular grammar and vocabulary practice throughout the course.

## Assessment Overview

The GCSE is assessed through four equally weighted components (25% each):

### Listening

- Multiple-choice and short-answer questions on spoken extracts.
- Includes a dictation task requiring students to write short sentences.

### Speaking

- Role-play, Reading Aloud, Conversation, and Photo Card Discussion.

## Reading

- Multiple-choice and short-answer questions on written texts.
- Includes a translation from French to English.

## Writing

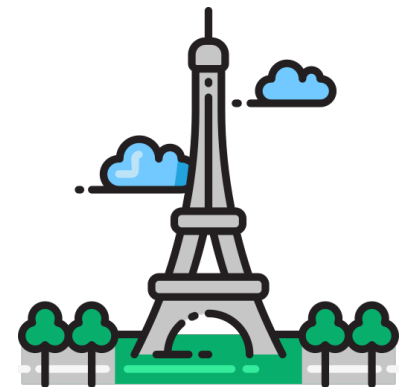
- Writing tasks, such as emails, blogs, or descriptive pieces.
- Includes a translation from English to French.

## Careers and Further Study

Proficiency in French can lead to careers in international business, tourism, translation, teaching, and diplomacy. It is also an invaluable skill for securing promotions and higher earning potential, with multilingual professionals often earning up to 20% more.

## Who to Contact for More Information

For further details, please speak to Mr Pardo Roques, Miss Le Therisien, or Mrs Stanford.



# GCSE Geography

**Examination Board:** AQA (Specification 8035)

## Why Choose Geography?

Geography helps students make sense of the world around them, exploring a wide range of topics such as urban issues, world development, extreme environments, landscapes, and hazards. This dynamic subject combines theory and practical application, offering opportunities to develop key skills including:

- Modern computer-based mapping (GIS).
- Map interpretation and fieldwork techniques.
- Presenting, debating, and role-play skills.
- Report writing and data analysis, enhancing literacy and numeracy.

Fieldwork is an integral part of the course, offering students the chance to experience topics first-hand, broaden their perspectives, and enjoy learning in real-world environments.

## What Will You Study?

The course is divided into three components:

### Living with the Physical Environment

- Themes: Natural Hazards: Tectonic activity, weather hazards, and climate change.
- The Living World: Ecosystems, tropical rainforests, and hot deserts.
- Physical Landscapes in the UK: Coasts and river landscapes.

Assessment:

- Written exam (1 hour 30 minutes).
- Worth 88 marks, including 3 marks for SPaG (Spelling, Punctuation, Grammar, and Specialist Terminology).
- 35% of the overall qualification.

### Challenges in the Human Environment

- Themes: Urban Issues and Challenges: Urban change in the UK and newly emerging economies, plus sustainable urban development.
- The Changing Economic World: Addressing the development gap, uneven development, and trade in both the UK and globally.
- The Challenge of Resource Management: Global resource distribution and management of food, water or energy.

#### Assessment:

- Written exam (1 hour 30 minutes).
- Worth 88 marks, including 3 marks for SPaG.
- 35% of the overall qualification.

### Geographical Applications

- Key Features: Decision-making section based on a pre-release resource booklet (available 12 weeks before the exam).
- Application of fieldwork experiences and geographical skills.

#### Assessment:

- Written exam (1 hour 30 minutes).
- Worth 76 marks, including 6 marks for SPaG.
- 30% of the overall qualification.

### **Fieldwork Opportunities**

Students will participate in two fieldwork trips to contrasting environments. These trips provide valuable experiences that support exam preparation by developing skills in data collection, representation, analysis, and applying geographical concepts.

### **Careers and Further Study**

Geography equips students with transferable skills applicable to a range of careers, including urban planning, environmental consultancy, GIS, education, and more. It also provides a solid foundation for further study at A-level and beyond.

### **Who to Contact for More Information**

For further details, please speak to Mrs Foulds, Mrs Richmond or Mrs Shetra-Tilley.



# BTEC Level 1/Level 2 Tech Award in Health and Social Care

**Examination Board:** Pearson (Qualification No: 603/7047/6)

**Qualification Level:** Equivalent to one GCSE

## Why Choose Health and Social Care?

The course is a study programme which provides an introduction to the Health and Social Care sector. You will study three core components giving you the knowledge and understanding to work in this area. The course also aims to provide you with skills used by health care professionals on a daily basis.

You will also learn about health care services and the importance of care values. These skills will be applied to realistic and local area scenarios. If you are interested in working with people, or want to care for and help others, Health and Social Care could be for you. Throughout the course you will learn through investigation, develop knowledge and understanding about health, social care and early years. Students will complete practical work, learn about and understand the world we live in.

## Course Overview

The course is structured around three key components, each focusing on different aspects of Health and Social Care to provide a comprehensive understanding of the subject:

### Component 1 – Human lifespan development

In this component, you will study the areas of growth and development that contribute to the whole person, including physical, intellectual, emotional and social. You will reflect on the factors that impact on everyone's life, such as lifestyle, culture or relationships with family, and consider the ways they may affect each area of growth and development.

### Component 2 – Health and Social Care Services and Values

In this component, you will learn about the range of health and social care services (primary, secondary and tertiary), any barriers individuals face accessing them and how they may be overcome. You will learn about the skills, attributes and values required to give care.

### Component 3 – Health and wellbeing

In this component, you will learn what is meant by health and wellbeing and how it is affected by a range of factors. You will learn to interpret health indicators that measure physiological health and lifestyle. You will learn how to design a health and wellbeing plan and set targets

## Assessment Overview

### Internal Coursework – 60% of final mark

Component 1 (30%) – Written tasks set by the exam board and marked internally

Component 2 (30%) – Written tasks set by the exam board and marked internally

### Written Examination – 40% of final mark

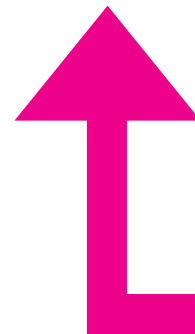
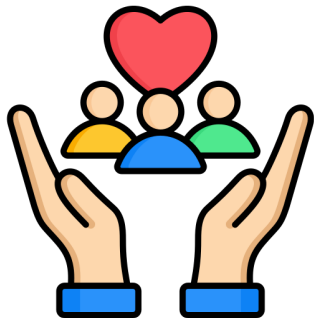
One exam - 2 hours – comprising of multiple choice, short answer and long answer questions to assess knowledge of Health and wellbeing

### Careers and Further Study

This course provides a strong foundation for further study in Health and Social Care at Level 3 or related fields such as childcare, nursing, and social work. It also opens pathways to apprenticeships or careers in the health and social care sector, which is one of the fastest-growing industries in the UK.

### Who to Contact for More Information

For further details, please speak to Miss Bethell or Mrs Grainger.



# GCSE History

**Examination Board:** Edexcel (Specification 1HI0)

## Why Choose History?

History is a fascinating and multi-disciplinary subject that explores key events, people, and movements that have shaped the world we live in today. This course builds on the historical skills you have developed in Years 7–9, such as constructing arguments, evaluating evidence, and honing your written communication skills.

Our diverse course spans a wide time period and covers British, European, and international history. You'll study some familiar topics in greater depth, alongside new areas that bring fresh perspectives to your understanding of the past. With a focus on both knowledge and skills, this GCSE is an excellent foundation for further study and careers that value critical thinking and analysis.

## What Will You Study?

The course consists of four engaging topics:

### 1. Medicine in Britain (c.1250–present)

- A thematic study examining how medicine has changed over time.
- Includes a case study of surgery and treatment on the Western Front during the First World War.

### 2. Early Elizabethan England (1558–88)

- A British depth study exploring the challenges Elizabeth I faced as Queen of England.

### 3. The American West (c.1835–c.1895)

- A period study focusing on the impact of white settlement on the Indigenous Peoples of the Americas.

### 4. Weimar and Nazi Germany (1918–39)

- A modern depth study analysing Germany's position after the First World War, Adolf Hitler's rise to power, and life in 1930s Germany.



## Assessment Overview

The GCSE is assessed through three exam papers, covering the four key topics:

### Paper 1: Thematic Study and Historic Environment

- Duration: 1 hour 20 minutes.
- Weighting: 30% of the qualification.
- Section A: The British Sector of the Western Front, 1914–18.
- Section B: Medicine in Britain, c.1250–present.

### Paper 2: Period Study and British Depth Study

- Duration: 1 hour 50 minutes.
- Weighting: 40% of the qualification.
- Section A: Early Elizabethan England, 1558–88.
- Section B: The American West, c.1835–c.1895.

### Paper 3: Modern Depth Study

- Duration: 1 hour 30 minutes.
- Weighting: 30% of the qualification.
- Focus: Weimar and Nazi Germany, 1918–39.

## Careers and Further Study

History equips students with valuable skills in critical thinking, analysis, and communication, which are highly regarded in fields such as law, journalism, education, politics, and business. It also provides an excellent foundation for A-level History and related subjects.

## Who to Contact for More Information

For further details, please speak to Mrs Kenway, Mr Shaw, or Mrs Yuan.



# GCSE Music

**Examination Board:** OCR (Specification J536)

## Why Choose Music?

GCSE Music is a dynamic and engaging course that builds on the knowledge and skills developed in Years 7–9. Students will explore a variety of musical genres, develop their performance and composition skills, and enhance their listening and appraising abilities.

Music is a subject that fosters creativity, critical thinking, and collaboration. It also equips students with transferable skills such as organisation, logical thinking, self-evaluation, and teamwork—qualities highly valued by further education providers and employers.

## What Will You Learn?

The course covers Musical Elements, Musical Contexts, and Musical Language through the following five areas of study:

1. My Music – Focusing on your chosen instrument or voice.
2. The Concerto Through Time – Exploring the development of the concerto.
3. Rhythms of the World – Investigating music from different cultures and traditions.
4. Film Music – Understanding how music is used in films to create atmosphere and emotion.
5. Conventions of Pop – Examining popular music from the 1950s to the present day.

## Assessment Overview

The course is assessed through three components:

1. Performance (30%)
  - One solo performance and one ensemble (group) performance are required.
  - Students must regularly practise and perform throughout the course.
2. Composition (30%)
  - Two original compositions: one set by the pupil and one set by the exam board.
  - Both compositions must include a written version and a recording, submitted for moderation.
3. Listening and Appraising (40%)
  - Assessed through a final written examination.
  - Questions are based on recorded music from Areas of Study 2–5.

### **Is This Course Suitable for Me?**

This course is ideal for students who enjoy performing, practical lessons, and learning about different styles of music. It suits pupils who already sing or play an instrument and are committed to practising and improving their musical skills throughout the two years.

### **Careers and Further Study**

GCSE Music provides a strong foundation for further study in:

- Music and Music Technology (A level or BTEC).
- Performing Arts and related fields.

Music students demonstrate dedication and commitment, making them stand out when applying for further education or employment.

### **Who to Contact for More Information**

For further details, please speak to Miss Byrne.



# Option Support

Not a GCSE qualification, this option is designed to provide additional support for students who need extra help catching up on their other subjects. It also offers opportunities to explore different learning environments, gain work experience, and pursue alternative curriculum qualifications that will prepare students for their Post-16 careers.

The course has a practical focus and includes elements such as:

## Key Skills

- English
- Maths
- ICT
- Problem-solving
- Teamwork.

## Additional Support

Tailored input for core subjects and option choices.

## Life Skills

Practical skills to support independence and future planning.

*Students will be invited to join this option course based on their individual needs.*



# GCSE Art and Design: Photography

**Examination Board:** AQA (Specification 8206)

## Why Choose Photography?

The Photography course focuses on developing technical and creative skills through visual exploration and digital media. Students will create a portfolio of photographic work, exploring themes, techniques, and processes. This course is ideal for those interested in careers such as graphic design, digital media, fashion, or advertising, or for students wanting to enhance their creative flair.

## Key Skills Developed

- Capturing and editing photographic images based on visual research.
- Developing ideas inspired by the work of photographers and visual artists.
- Exploring and refining techniques in digital and traditional photography.
- Producing a personal response that connects to the work of others.

## Assessment Overview

Assessment for the course is divided into two components:

### 1. Controlled Assessment (Portfolio of Work) – 60%

Students produce a diverse portfolio of photographic work throughout Year 10 and Year 11, exploring different styles and approaches.

### 2. Externally-Set Assignment – 40%

In Year 11, students complete a photography project based on a question from an examination paper, culminating in a 10-hour final piece created under exam conditions.

## Who to Contact for More Information

For further details, please speak to Miss Hart.



# GCSE Religious Studies

**Examination Board:** AQA (Specification 8062)

## Why Choose Religious Studies?

Religious Studies is a thought-provoking subject that explores beliefs, teachings, and ethical issues, encouraging students to think critically and reflect on different perspectives. This course provides valuable skills in analysis, evaluation, and communication, which are highly regarded in further education and a wide range of careers.

## What Will You Learn?

The course is divided into two components:

### Component 1: The Study of Religions

Students will study the beliefs, teachings, and practices of Christianity and Buddhism.

#### **Christianity**

- Beliefs and Teachings: Key beliefs about the nature of God; Jesus Christ and salvation.
- Practices: Worship, festivals, and the role of the Church in local and worldwide communities.

#### **Buddhism:**

- Beliefs and Teachings: Key beliefs, the role of Dharma, the Four Noble Truths, and the Buddha.
- Practices: Buddhist ethics, worship, and festivals.

#### **Assessment**

- Written exam: 1 hour 45 minutes.
- 96 marks (plus 5 marks for spelling, punctuation, and grammar).
- 50% of the GCSE.

### Component 2: Philosophical and Ethical Studies

Students will explore a range of ethical and philosophical issues from multiple perspectives.

#### **Theme A: Relationships and Families**

- Sex, marriage, and divorce; families and gender equality.

**Theme B: Religion and Life**

- The origins and value of the universe; ethical issues such as animal rights, abortion, and euthanasia.

**Theme D: Religion, Peace, and Conflict**

- Pacifism, violent protests, and views on weapons of mass destruction.

**Theme E: Religion, Crime, and Punishment**

- Reasons for crime, aims of punishment, attitudes towards the death penalty, suffering, and forgiveness.

**Assessment:**

- Written exam: 1 hour 45 minutes.
- 96 marks (plus 5 marks for spelling, punctuation, and grammar).
- 50% of the GCSE.

**Assessment Objectives**

The exams will assess students on:

- AO1: Knowledge and understanding of religion and beliefs, including practices, sources of authority, and their influence on individuals and societies.
- AO2: Analysis and evaluation of religion and belief, including their significance and influence.

**Progression to Further Study**

A GCSE in Religious Studies provides a foundation for A-level courses in Philosophy, Religious Studies, and related subjects. The skills gained are also valuable for other subjects such as English, Psychology, Sociology, and History.

**Careers and Opportunities**

Religious Studies is particularly beneficial for careers involving people, such as teaching, law, public services, and journalism. It is a well-respected subject, valued for its focus on critical thinking, reflective analysis, and communication skills.

**Who to Contact for More Information**

For further details, please speak to Mrs Huxley-Coles.



# GCSE Separate Sciences

## Examination Board: AQA

- GCSE Biology (Specification 8461)
- GCSE Chemistry (Specification 8462)
- GCSE Physics (Specification 8463)

## Why Choose GCSE Separate Sciences?

The Separate Sciences course provides students with three individual GCSE qualifications in Biology, Chemistry, and Physics. This pathway is designed for students who demonstrate strong academic performance and an aptitude for science, offering a deeper and more comprehensive understanding of scientific principles than Combined Science.

Students are selected and invited to study Separate Sciences based on their performance in lessons and challenging assessments from Year 7 onwards. This ensures that only those capable of managing the additional content, longer exams, and greater depth of study are enrolled, avoiding unnecessary pressure on students who may find the course overly demanding.

For students transitioning from Combined Science, previously purchased revision guides can be exchanged for three Separate Science revision guides (Biology, Chemistry, and Physics) at no extra cost.

## Course Overview

Students will have five timetabled lessons over two school weeks, with specialist teachers who are experts in their science field.

## What Will You Study?

Students will cover all the core content from AQA Combined Science Trilogy, with topics studied in greater depth. Additionally, GCSE Physics includes extra units on Light and Space, providing an enhanced understanding of this fascinating field.

## Careers and Further Study

Separate Sciences provides an excellent foundation for A-level studies in Biology, Chemistry, and Physics, or related disciplines such as Psychology, Engineering, and Environmental Science. It is also ideal for students pursuing careers in medicine, veterinary science, engineering, scientific research, or technology. This qualification demonstrates a high level of academic achievement and commitment, which is valued by universities and employers alike.



## Assessment Overview

### Biology

#### **Paper 1**

This paper assesses your knowledge of cell biology, the structure and functions of different cells, the organisation of living organisms, the body's response to infection, and the processes involved in bioenergetics.

#### **How It's Assessed:**

- 1 hour 45 minutes written exam.
- Foundation or Higher Tier.
- 100 marks.
- 50% of GCSE

#### **Paper 2**

This paper covers homeostasis and how the body maintains internal conditions, inheritance and genetic variation, evolution, and the study of ecosystems and the environment.

#### **How It's Assessed:**

- 1 hour 45 minutes written exam.
- Foundation or Higher Tier.
- 100 marks.
- 50% of GCSE

#### **Who to Contact for More Information**

For further details, please speak to Mr Brown.

### Chemistry

#### **Paper 1**

This paper assesses your understanding of atomic structure, the periodic table, bonding and material properties, quantitative chemistry, chemical reactions, and energy changes during reactions.

#### **How It's Assessed:**

- 1 hour 45 minutes written exam.
- Foundation or Higher Tier.
- 100 marks.
- 50% of GCSE

#### **Paper 2**

This paper focuses on the rate of chemical reactions, organic chemistry, techniques for chemical analysis, the composition and evolution of the Earth's atmosphere, and the sustainable use of resources.

#### **How It's Assessed:**

- 1 hour 45 minutes written exam.
- Foundation or Higher Tier.
- 100 marks.
- 50% of GCSE

### Physics

#### **Paper 1**

This paper examines your knowledge of energy, electrical circuits, the particle model of matter, and the structure of atoms, including nuclear physics.

#### **How It's Assessed:**

- 1 hour 45 minutes written exam.
- Foundation or Higher Tier.
- 100 marks.
- 50% of GCSE

#### **Paper 2**

This paper assesses your understanding of forces, wave behaviour, magnetism and electromagnetism, and the study of space physics.

#### **How It's Assessed:**

- 1 hour 45 minutes written exam.
- Foundation or Higher Tier.
- 100 marks.
- 50% of GCSE



# GCSE Spanish

**Examination Board:** AQA (Specification 8062)

## Why Choose Spanish?

Studying Spanish equips students with language skills that enhance cultural understanding, academic growth, and career prospects. Employers highly value language qualifications, with 90% stating they favour candidates with these skills. A GCSE in Spanish demonstrates resilience, determination, and adaptability, providing a strong foundation for global opportunities.

## What Will You Study?

The course explores the following cultural themes:

1. People and Lifestyle
  - Identity and relationships with others.
  - Healthy living and lifestyle.
  - Education and work.
2. Popular Culture
  - Free-time activities.
  - Customs, festivals, and celebrations.
  - Celebrity culture.
3. Communication and the World Around Us
  - Travel and tourism, including places of interest.
  - Media and technology.
  - The environment and where people live.

Students are expected to commit to regular grammar and vocabulary practice throughout the course.

## Assessment Overview

The GCSE is assessed through four equally weighted components (25% each):

### 1. Listening

- Multiple-choice and short-answer questions on spoken extracts.
- Includes a dictation task requiring students to write short sentences.

### 2. Speaking

- Role-play, Reading Aloud, Conversation, and Photo Card Discussion.

### 3. Reading

- Multiple-choice and short-answer questions on written texts.
- Includes a translation from Spanish to English.

### 4. Writing

- Writing tasks, such as emails, blogs, or descriptive pieces.
- Includes a translation from English to Spanish.

## Careers and Further Study

Proficiency in Spanish can lead to careers in international trade, hospitality, media, teaching, and foreign service. With Spanish being one of the most widely spoken languages globally, it offers significant advantages in global markets and career development.

## Who to Contact for More Information

For further details, please speak to Mr Pardo Roques or Miss García.



# Sport Pathway

At The Ripley Academy, we offer two courses within the Sports Pathway: GCSE Physical Education and BTEC Tech Award in Sport. Depending on their abilities, interests, and learning style, students will be guided onto the most suitable course to help them achieve success in Sport.

The decision to enrol on GCSE PE or BTEC Sport will be made based on the student's strengths, interests, and learning preferences. Both courses offer excellent progression routes into further study and careers in sport, fitness, and health.

## GCSE Physical Education

**Examination Board:** AQA (Specification 8582)

### **Why Study GCSE Physical Education?**

This course allows students to develop their practical ability in three chosen sports while gaining an understanding of how to analyse and evaluate their performances. The course content enables students to enjoy and appreciate the benefits of living a healthy and active lifestyle. GCSE PE is ideal for students aiming to pursue A-level PE, BTEC Level 3 Sport, or related qualifications and careers, such as sports coaching, fitness training, or sports science.

### **What Will You Study?**

The theory aspect of the course is based around topics such as Health and Fitness and Training, Applied Anatomy and Physiology, Movement analysis, Diet, Education and school, Cultural and social factors and Media, sponsorship, and technology in sport. The practical element will be assessed on students' ability to perform in 3 different activities as well as their ability to evaluate their performance. This can include games activities, athletic activities, fitness activities and gymnastic activities. **It is strongly advised that students are playing or taking part in at least one sport outside of school and performing regularly at a high level.**

### **Assessment Overview**

Written Examinations – 60% of final mark

Paper 1 (30%) - 1 hr 15mins - The Human Body and Movement in Physical Activity and Sport

Paper 2 (30%) - 1hr 15mins – Social-cultural Influences and Well-being in Physical Activity and Sport

Non Examination Assessment – 40% of final mark

Students will be assessed on their practical performance (30%) in three different sports. Students will also complete a written analysis and evaluation of performance (10%) to bring about improvement in one of the assessed sports.

## **BTEC Tech Award in Sport**

**Examination Board:** Pearson (Qualification No: 603/7068/3)

### **Why Study BTEC Sport?**

BTEC Sport provides a practical learning experience for students who want to develop technical skills, leadership, and organisation. The course focuses on real-life sports scenarios and builds essential communication, time management, and problem-solving skills. BTEC Sport is an excellent pathway to BTEC Level 3 Sport or Sport Science and higher education courses. Career opportunities include coaching, sports journalism, health and fitness promotion, and sports facility management.

### **What Will You Study?**

**Component 1** – Preparing participants to take part in sport and physical activity

This includes the different types of physical activity, potential barriers to participation and ways to overcome them. Learners will also develop an applied understanding of anatomy and physiology as they learn how to plan and deliver a warm up to prepare participants to take part in sport and physical activity.

**Component 2** – Taking part and improving other participants sporting performance

This includes the components of fitness, practical participation in sport, roles of officials, rules and regulations and learning methods to improve performance. Learners will plan and deliver sports drills and conditioned practices for their chosen sport.

**Component 3** – Developing fitness to improve other participants performance in sport and physical activity

This includes the importance of fitness, different types of fitness, fitness testing, training and programming for different types of participants.

### **Assessment Overview**

Internal Coursework – 60% of final mark

Component 1 (30%) – Written tasks and video evidence of leading a session

Component 2 (30%) – Written tasks and video evidence of performance in a sport

Written Examination – 40% of final mark

One exam - 1 hr 30 mins – comprising of multiple choice and short answer questions to assess knowledge of fitness and exercise

### **Who to Contact for More Information**

For further details, please speak to Mrs Grainger.



# Information on Careers Opportunities and Post-16 Pathways

All students are now required to remain in education or training until the age of 18.

At the age of 14, many students may not yet be certain about the career they wish to pursue after completing full-time education. It is also common for people to change their minds multiple times. At this stage, it is essential to keep your options open, enabling you to choose the most suitable pathway at the age of 16

## **Post-16 Pathways**

The main pathways available after Year 11 include:

- Employment with Training – For example, apprenticeships with a 'day release' option to continue studying.
- Full-time Further Education – Leading to GCSEs, Advanced Level qualifications, or vocational qualifications at a Sixth Form or College of Further Education.
- University Education – Following the completion of A-levels or equivalent qualifications.
- Employment After University – Careers in a wide range of fields that build on further education and higher education qualifications.

For any further guidance on careers or Post-16 and Post-18 pathways, contact our Head of Careers, Mrs L Tollervey, at [ltollervey@ripleyacademy.org](mailto:ltollervey@ripleyacademy.org).

# The Ripley Academy Sixth Form

Ripley Academy Sixth Form is the natural progression route for students at The Ripley Academy. Our Sixth Form is a thriving educational institution that continues to grow and excel. We would like to take this opportunity to highlight some of the main reasons why you should choose Ripley for the next step of your journey.

## **Great pastoral support**

We know our students and we guarantee that you will be given the support you need to achieve your potential.

## **Small class sizes**

With smaller group sizes, this allows more one-to-one support from classroom teachers in a learning environment where you matter

## **Enthusiastic subject specialists**

All of our staff are passionate about their subject and will ensure that you will share that passion.

## **Individualised academic support and guidance**

We know just how important excellent academic outcomes are for your future. We are committed to helping you achieve your goals.

## **Personalised UCAS support**

We know just how important destinations are for our students and we have an excellent track record of ensuring students successfully move on to their chosen destinations

## **High Aspirations and Ambition**

The Ripley Academy shares your high aspirations and has a track record of getting students on their chosen courses at the very best universities, including Oxbridge

## **A tailor-made Enrichment Programme**

We know just how important the sixth form is in preparing students with the right skills to be equipped for life in the adult world.

Visit our website at [www.ripleyacademy.org](http://www.ripleyacademy.org) or contact Mrs E Taylor at [etaylor@ripleyacademy.org](mailto:etaylor@ripleyacademy.org) for further information.



Sixth Form  
The Ripley Academy



**The Ripley Academy**  
Nothing Short of Remarkable